

# Q-bar

## Bar Code Production for Sage Line 50 and 100.

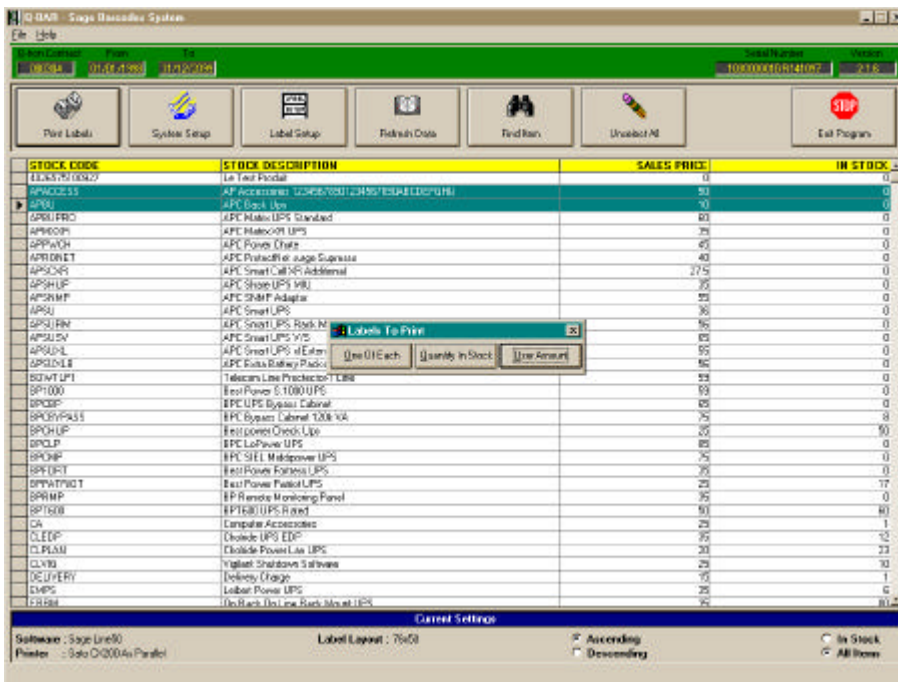
### Quick and easy Bar Code production Linking directly with Sage.

Q-bar utilises a range of reliable thermal bar code printers to produce a bar code label from Sage Line 50 Product or Line 100 Stock Codes.

The Windows based interface software displays all product codes, descriptions and sales prices along with the current quantity in stock.



Single or multiple items can be selected then one of each, the current quantity in stock or a user defined amount of labels can be printed. An item search facility enables fast selection of products. All current settings are displayed for easy reference.



### Product Features

**Windows based interface software.**

**Links directly with Sage Line 50 Products or Line 100 Stock Codes.**

**Prints CODE39 alpha numeric bar codes.**

**'Switchable' option for VAT inclusive or exclusive pricing.**

**Inverted label header for increased clarity.**

**Fully compatible with Q-data**

**Product search facility.**

**Multiple label sizes.**

**Optional + version uses manufacturers bar code table for product cross-referencing.**

### Q-tron

Wadworth Hall  
Wadworth  
Doncaster  
DN11 9BL  
United Kingdom

Tel: +44 (0) 1302 311066  
Fax: +44 (0) 1302 311774

Email: [sales@q-tron.co.uk](mailto:sales@q-tron.co.uk)  
[www.q-tron.co.uk](http://www.q-tron.co.uk)

### Q-tron (UK) Ltd.



ABC123  
THE ITEM DESCRIPTION

**£1.23 inc VAT**

Example Bar Code Label

Any of the label fields can be switched on or off and the price can be displayed either including or excluding VAT. All Line 100 price levels can be selected.

The system supports multiple label sizes from 38x25mm to 102x148mm depending on printer type.

# Q-bar Product Information

## Q-bar Software

<u>Code</u>	<u>Description</u>	<u>Price £</u>
QTSWDQBAR	Q-bar Software with Interface to Sage (Windows version)	500.00
QTSWD4BAR	Q-bar Software with Interface to Sage (4GL version)	500.00
QTSWDQBARP	Q-bar+ Software with Interface to Sage (Windows version)	750.00
QTSWD4BARP	Q-bar+ Software with Interface to Sage (4GL version)	750.00

- Please note, the above Q-bar+ products require an additional bar code table in order to reference alternative or manufacturers bar codes. This can be in the form of Q-scan+ or Q-plus as detailed below.
- These products include 30 days telephone installation support only. Full software support and update cover available on request.

## Printers

The space saving desktop printers that accompany Q-bar give all the advantages of larger label printers at an economical price. They benefit from low cost, easy to load supplies, which are available in a variety of sizes.

<u>Code</u>	<u>Description</u>	<u>Price £</u>
ELBCP2722	Eltron 2722 Bar Code Printer (Thermal Transfer)	475.00
ELBCP2742	Eltron 2742 Bar Code Printer (Thermal Transfer)	494.00
ELBCP2746	Eltron 2746 Bar Code Printer (Thermal Transfer)	1034.00

- Hardware cover is optional and prices are available on request.

### PRICES FOR LABELS AND RIBBONS VARY DEPENDING ON SIZE

Please contact our Sales Department for further information.

Be sure that the label size will support your maximum length of product code when printed as a bar code.

## Q-plus

The Q-plus software incorporates a bar code table for use with Q-products where an alternative or manufacturers bar code needs to be referenced against a Sage Product Code. It will also allow the manual input of bar coded data.

<u>Code</u>	<u>Description</u>	<u>Price £</u>
QTSWDQPLUS	Q-plus Software with Interface to Sage (Windows version)	290.00
QTSWD4PLUS	Q-plus Software with Interface to Sage (4GL version)	290.00

- These products include 30 days telephone installation support only. Full software support and update cover available on request.

**All prices are subject to VAT and delivery.**

Q-tron reserve the right to alter Product specification without notice.