

# Q-inv

## Remote invoicing for Sage Line 50 and 100

### Hand held remote input of invoice data linked to a Customer Account

Q-inv utilises a robust hand held data capture terminal with integral CCD distance bar code scanner. With an easy to use alphanumeric keypad for manual input of data.

Six line menu driven, easy to read LCD display with 'back light'. Simple cable connection to a PC Com port or optional infra-red and wireless connection cradle.

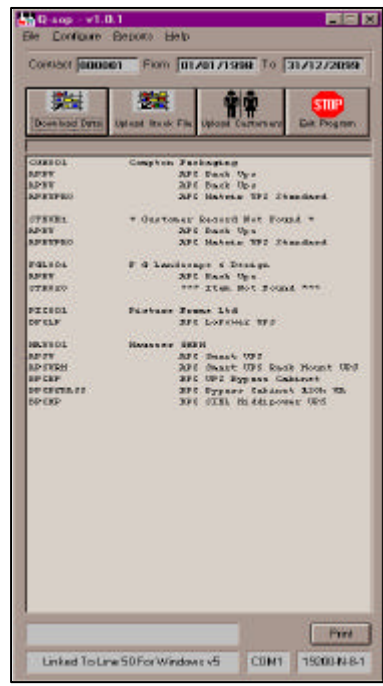


Item	Customer	Order Ref	Stock Code	Quantity in Stock	Quantity Scanned	Current Quantity
1	1000000	1000000	APPL	20	0	20
2	1000000	1000000	APPL	20	0	20
3	1000000	1000000	APPL	20	0	20
4	1000000	1000000	APPL	20	0	20
5	1000000	1000000	APPL	20	0	20
6	1000000	1000000	APPL	20	0	20
7	1000000	1000000	APPL	20	0	20
8	1000000	1000000	APPL	20	0	20
9	1000000	1000000	APPL	20	0	20
10	1000000	1000000	APPL	20	0	20
11	1000000	1000000	APPL	20	0	20
12	1000000	1000000	APPL	20	0	20
13	1000000	1000000	APPL	20	0	20
14	1000000	1000000	APPL	20	0	20
15	1000000	1000000	APPL	20	0	20
16	1000000	1000000	APPL	20	0	20
17	1000000	1000000	APPL	20	0	20
18	1000000	1000000	APPL	20	0	20
19	1000000	1000000	APPL	20	0	20
20	1000000	1000000	APPL	20	0	20
21	1000000	1000000	APPL	20	0	20
22	1000000	1000000	APPL	20	0	20
23	1000000	1000000	APPL	20	0	20
24	1000000	1000000	APPL	20	0	20
25	1000000	1000000	APPL	20	0	20
26	1000000	1000000	APPL	20	0	20
27	1000000	1000000	APPL	20	0	20
28	1000000	1000000	APPL	20	0	20
29	1000000	1000000	APPL	20	0	20
30	1000000	1000000	APPL	20	0	20
31	1000000	1000000	APPL	20	0	20
32	1000000	1000000	APPL	20	0	20
33	1000000	1000000	APPL	20	0	20
34	1000000	1000000	APPL	20	0	20
35	1000000	1000000	APPL	20	0	20
36	1000000	1000000	APPL	20	0	20
37	1000000	1000000	APPL	20	0	20
38	1000000	1000000	APPL	20	0	20
39	1000000	1000000	APPL	20	0	20
40	1000000	1000000	APPL	20	0	20
41	1000000	1000000	APPL	20	0	20
42	1000000	1000000	APPL	20	0	20
43	1000000	1000000	APPL	20	0	20
44	1000000	1000000	APPL	20	0	20
45	1000000	1000000	APPL	20	0	20
46	1000000	1000000	APPL	20	0	20
47	1000000	1000000	APPL	20	0	20
48	1000000	1000000	APPL	20	0	20
49	1000000	1000000	APPL	20	0	20
50	1000000	1000000	APPL	20	0	20

The Windows based interface software allows full editing of the scanned invoice prior to posting to the selected customer account.

Problems such as negative stock are highlighted, alerting the user prior to posting to Sage.

The stock code, quantity scanned and the current quantity in stock are displayed on both the hand held unit and the 'download' screen for comparison.



The ability to edit the invoice details, investigate any discrepancies or adjustments before posting to the selected Sale account.

The main screen facilitates uploading of the Product File to the hand held terminal. It also receives the captured data for the scanned invoice.

Confirmation of postings are displayed and automatically stored in the audit trail.

All current settings are displayed at the foot of the main screen for easy reference.

### Product Features

- Links directly with Sage Line 50/100.
- Downloads Product File for referencing.
- Switchable stock referencing.
- Customer order number posted to Sage.
- Full editing facility of Invoice before posting to Sage.
- Full audit trail facility.
- Optional + version uses manufacturers bar code table for product cross-referencing.

**Q-tron**  
The Ross Wing  
Redhill Court  
Doncaster  
DN11 9ED  
  
Tel: +44 (0) 1302 311066  
Fax: +44 (0) 1302 311774  
Email: [sales@q-tron.co.uk](mailto:sales@q-tron.co.uk)  
[www.q-tron.co.uk](http://www.q-tron.co.uk)



# Product Information

## Optional Bar Code Referencing

All scanning products from Q-tron (UK) Ltd come in two variants. In their standard form they will only scan bar coded representations of Sage Product Codes. In their *plus* (+) form each Sage Product Code can be linked to a bar code table containing alternative bar codes. Therefore if an alternative code is scanned, the data is converted into its corresponding Sage Product Code.

## Q-inv Software

<u>Code</u>	<u>Description</u>	<u>Price £</u>
QTSWDQINV	Q-inv Software with Interface to Sage (Windows version)	500.00
QTSWDQINV+	Q-inv + Software with Interface to Sage (Windows version)	750.00
QTSWD4INV	Q-inv Software with Interface to Sage (4GL version)	500.00
QTSWD4INV+	Q-inv + Software with Interface to Sage (4GL version)	750.00

- **Please note:** the above Q-inv+ products require an additional bar code table in order to reference alternative or manufacturers bar codes. This can be in the form of Q-scan+ or Q-plus as detailed below.
- These products include 30 days telephone installation support only. Full software support and update cover available on request.

## Data Capture Units

The Denso 5000, 6000 & 7000 models incorporate a high quality distance CCD scanner, capable of scanning bar codes in excess of 200mm in width. They are lightweight, easy to use and are equipped with a back lit LED display.

Care should be taken when ordering the data capture unit, as each of the models will accommodate different amounts of Customer or Product information. Our sales staff will be happy to advise on the appropriate unit

<u>Code</u>	<u>Description</u>	<u>Price £</u>
DEDCU8044	Denso D8000 Data Capture Unit (4MB)	975.00
DEDCU7164	Denso D7000 Data Capture Unit (4 MB )	1400.00

- Hardware cover is optional, prices available on request.

## Q-plus

The Q-plus software incorporates a bar code table for use with Q-products where an alternative or manufacturers bar code needs to be referenced against a Sage Product Code. It will also allow the manual input of bar coded data.

<u>Code</u>	<u>Description</u>	<u>Price £</u>
QTSWDQPLUS	Q-plus Software with Interface to Sage (Windows version)	290.00
QTSWD4PLUS	Q-plus Software with Interface to Sage (4GL version)	290.00

- These products include 30 days telephone installation support only. Full software support and update cover available on request.

All of the above prices are subject to VAT and delivery.

Q-tron (UK) Ltd reserves the right to alter Product specification without notice.